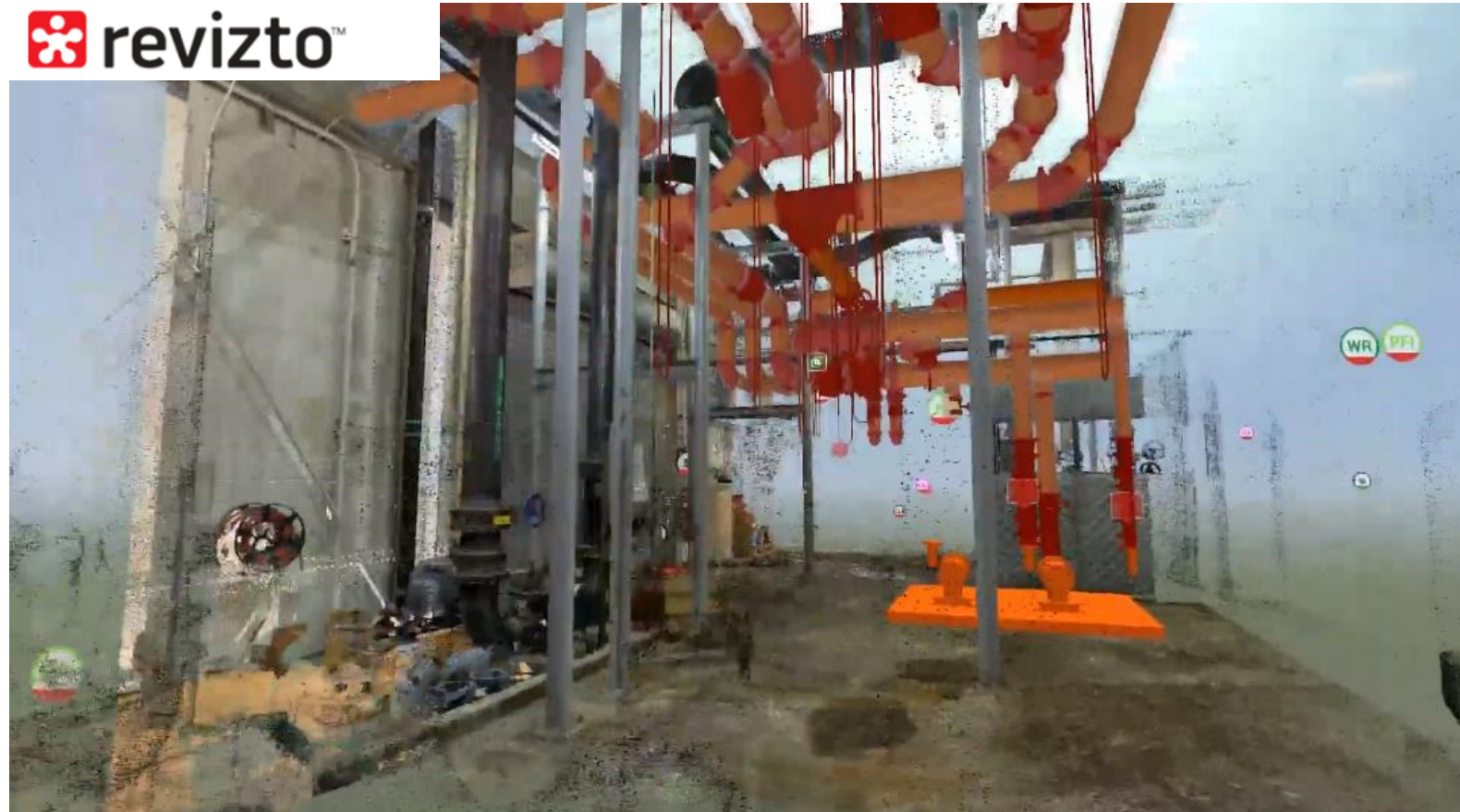


THE ODD

BIT OF NEWS

- 360 degree photo support in Issue Tracker attachments
- Import/Export project settings
- New measurement tools: Point cloud optimizations and improvements
- Ability to add markups to 2D stamps



THE ODD

BIT OF NEWS

FACIAL RECOGNITION
UP THE WAZOO

Millions are on the move in China, and Big Data is watching

More than 5 million people in China have now been banned from buying a high-speed rail ticket and 17 million stopped from buying air tickets because they appear on a social credit system black list.

By [Kirsty Needham](#)
February 6, 2019 – 11:30am



f t e A A A

Beijing: At Beijing's high-speed railway station, there is confusion as city workers heading home for Spring Festival encounter a new machine where humans once checked tickets.

Hat off, scarf off, eyes ahead – despite the bitter winter chill, China's facial recognition system 2.0 requires a clear image for its records. Passengers also put their national identity card in the machine.



Train travellers are confronted by a new facial recognition system as they travel home from Beijing for Chinese New Year. SANGHEE LIU

Dubbed the world's biggest human migration, Lunar New Year sees 400 million people across China travelling between January 21 and March 1.

Dai Shanshan, deputy director of the Beijing Station, told the *Beijing Evening News* that a system in which multiple cameras simultaneously watch a face has improved the speed and accuracy of Facial Recognition 2.0, a major upgrade installed for the railway's peak season.

THE ODD

BIT OF NEWS

ABAB PUBLICATIONS

BIM Consistency Documents

Consistent BIM Object Names & Properties	NATSPEC BIM Object Properties Generator
Clear Project Control	NATSPEC BIM Management (Execution) Plan
Clarity of Project Requirements	NATSPEC Project BIM Brief
Consistent Client Information Requirements	ABAB Asset Information Requirements
Clear Client Information Outputs	Client Asset Management Plan
Consistent Language	NATSPEC BIM Guide



BIM Process Consistency: Towards a Common Framework for Digital Design, Construction and Operation

Overview Report



www.abab.net.au

THE ODD

BIT OF NEWS

ABAB
PUBLICATIONS



Asset Information Requirements Guide:
Information required for the operation and maintenance of an asset



www.abab.net.au

Identifies the asset information components that are expected to be delivered in response to asset information requirements (AIR): models, documents and data.

It explains the basic concepts of digital information management (e.g. structured data) for those new to the subject, and seeks to dispel common misconceptions.

Focuses more on decision-making about the information required, rather than on providing detailed coverage about the information itself

THE ODD

BIT OF NEWS

NATSPEC worked with Masterspec (New Zealand) to develop a BIM object standard.

The OBOS complements and aligns with the recently released NATSPEC BIM Properties Generator



TolietPan		
IFCElementType:	IfcSanitaryTerminal	= IfcExportAs
ProductType:	TOILETPAN	= IfcExportType
ObjectType:	TolietPan	
Projected LOD (Design Model):	300	
Design Model):	Plumbing, Interiors	
Classification2015ProductsCode	Pr_40_20_93_94	Classification data
Classification2015ProductsTitle	WC pans	Classification data
Classification2015ProductsVersion	1.11	Classification data
CreatedBy	NATSPEC BIM	Admin data
CreatedByURL	NATSPEC BIM	Admin data
ModifiedIssue	NATSPEC BIM	Admin data
Rating	NATSPEC BIM	Code compliance data
ConstructionMethod	NATSPEC BIM	Construction logistics data
GrossWeight	NATSPEC BIM	Construction logistics data
ShippingWeight	NATSPEC BIM	Construction logistics data
StoragePlacementOnSite	NATSPEC BIM	Construction logistics data
AdditionalTax	NATSPEC BIM	Cost data
AssemblyCost	NATSPEC BIM	Cost data
ConceptualCost	NATSPEC BIM	Cost data
CostOverRun	NATSPEC BIM	Cost data
FutureCostAssumptions	NATSPEC BIM	Cost data
InstallationCost	NATSPEC BIM	Cost data
InstalledCost	NATSPEC BIM	Cost data
PurchaseInformation	NATSPEC BIM	Cost data
RecordedActualCost	NATSPEC BIM	Cost data
ShippingCost	NATSPEC BIM	Cost data
MaterialOwnershipCost	NATSPEC BIM	Cost data
AssessmentCondition	NATSPEC BIM	Facilities management data
ComponentID	NATSPEC BIM	Facilities management data
ExpectedLife	NATSPEC BIM	Facilities management data
InstallationDate	NATSPEC BIM	Facilities management data
PlacementCost	NATSPEC BIM	Facilities management data
WarrantyContent	NATSPEC BIM	Facilities management data
WarrantyEndDate	NATSPEC BIM	Facilities management data
WarrantyStartDate	NATSPEC BIM	Facilities management data
Capacity	NATSPEC BIM	Geometric data

THE ODD

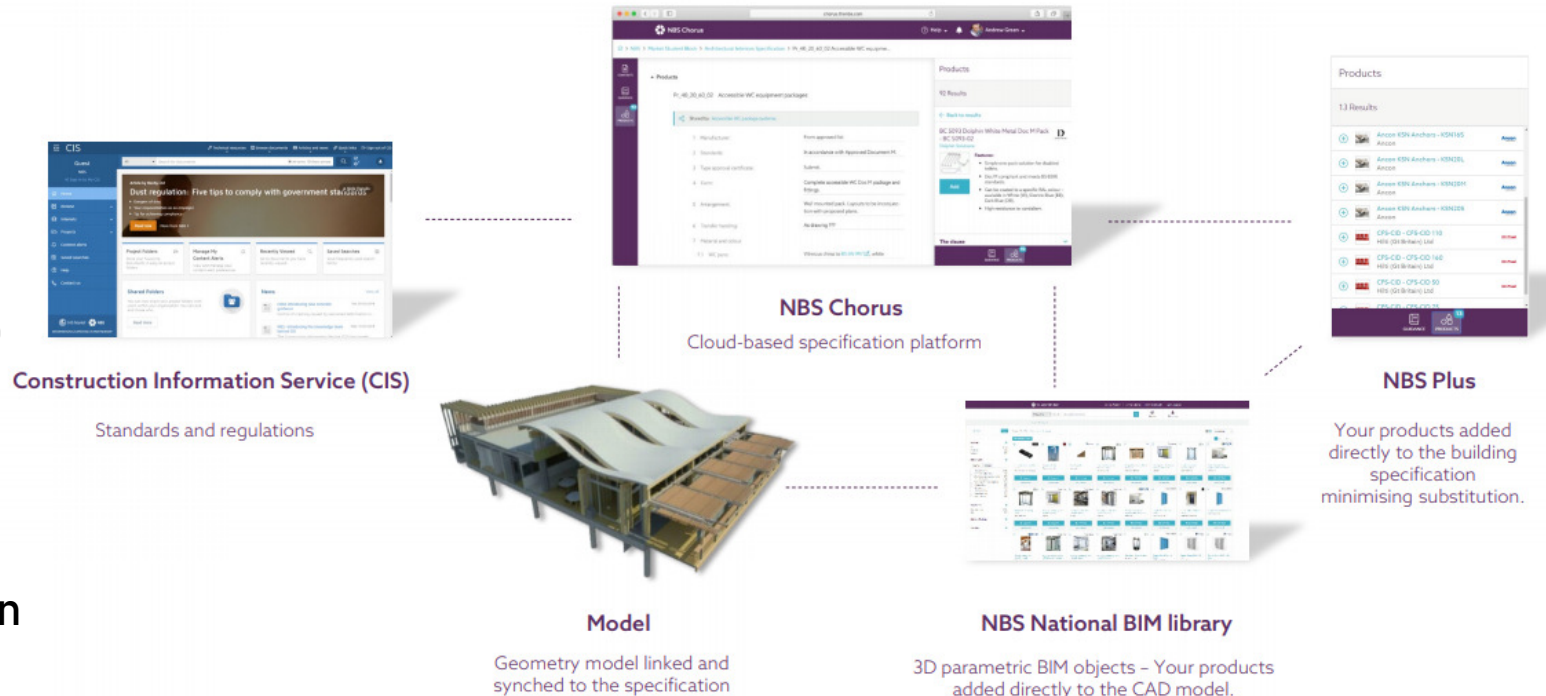
BIT OF NEWS

“NBS Chorus is the first intelligent, cloud based construction specification tool that links seamlessly to your BIM geometry model and the NBS BIM object Library using the NBS plugin. Australian specific content has been authored in Uniclass 2015 format to suit Australian Standards, the National Construction Code and local codes of practice.”



Intelligent construction specification

Used by over 90% of the AJ top 100 our platform enables architects, designers and engineers to rapidly develop specifications, and to work smarter and safer



WWW.THENBS.COM
MAY 2019

THE ODD

BIT OF NEWS

International Construction Measurement Coalition.

Seeking consultation for the second round.

A global cost management system for the construction industry.

UNICLASS FOR BEAN COUNTERS?

Technology Innovation in the Built Environment



News & Insight

Upholding Professional Standards

Training & Events

Careers

Search



Home > News & Insight > Contribute > Consultations > Consultation for ICMS 2nd Edition

Register your interest

Consultation for ICMS 2nd Edition

The International Construction Measurement Standards Coalition are seeking feedback on the second edition of ICMS, which incorporates life cycle costs.

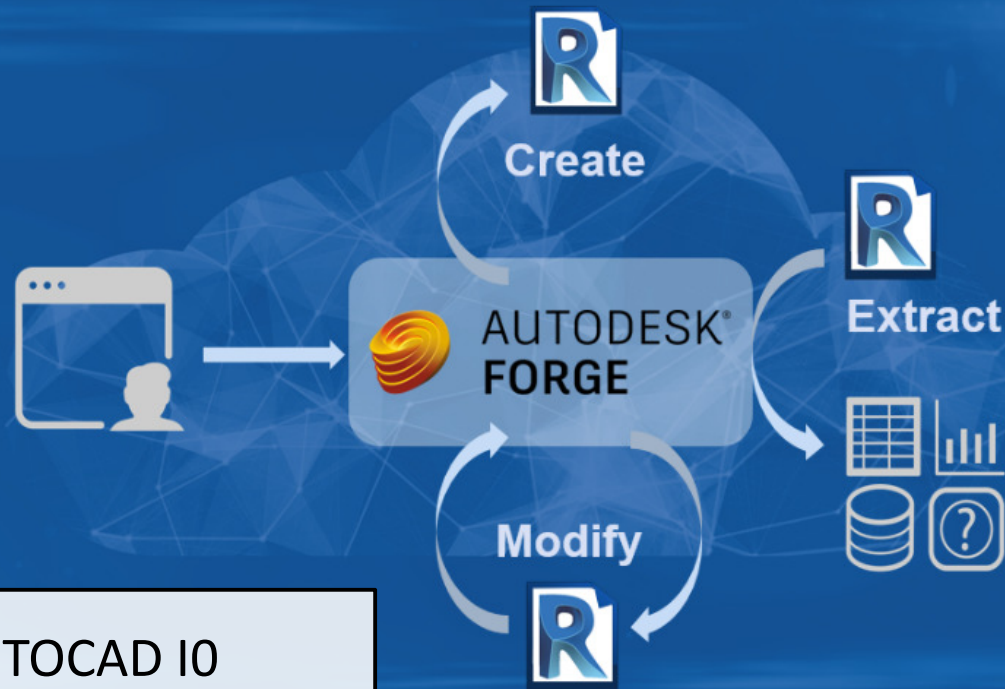
Share your views on ICMS 2nd Edition

TAKE PART >



THE ODD

BIT OF NEWS



AUTOCAD IO
DESIGN AUTOMATION

Design Automation puts the power of the Revit API at your fingertips in a Forge-based service.

e.g. create models automatically by entering parameters, validating specified design criteria and generating reports, and automatically modifying the model

Create cloud-native applications that work with Revit data