

CONSTRUCTION TECH & TRANSFORMATION

Bringing together construction companies, engineers and architects to drive productivity, cost-savings and safety

SYDNEY FEB 28

CONSTRUCTION TECH & TRANSFORMATION

CONSTRUCTION METHODS FOR
EXCELLENCE IN BUILDING DESIGN
AND DELIVERY

SMART BUILDINGS AUSTRALIA

HOW AUSTRALIA'S SMART DEVELOPMENT
IS TRANSFORMING ITS URBAN
AND RESIDENTIAL LIFESTYLE

1

Find out how Jacobs **calibrated the digital lens onto its pre-design, design and post occupancy outcomes** in its Australian Education City project.

2

Understand how Fulton Hogan is realising cost-savings and just-in-time scheduling and delivery by optimising real-time data across various project sites.

3

Learn how **Architecture BVN** is redefining workplace design through Project Octopus – its new interactive VR system incorporated in BIM.

4

Hear how Laing O'Rourke is integrating people and technology across all aspects of construction to **create safer, more sustainable and high performance of buildings**.

5

Find out how Downer **facilitates advanced work planning, design variation management and economic efficiency modelling** through BIM.

6

Leverage lessons learnt from the Grenfell Tower fire from **International Keynote RICS (UK)** and apply smart technologies to ensure building safety.

7

Learn best practice from GHD for **collecting, managing and analysing data to determine building characteristics and occupants' behaviour**.

8

Assess the role of emerging digital technologies in facilitating ethical decision-making in design, delivery and operation processes with **Arup**.

9

Leverage strategies from Stockland to **maximise spaces and improve the liveability and productivity of occupants**.

Melbourne MAR 4-6



4TH MODULAR CONSTRUCTION AND PRE-FABRICATION ANZ

2019 Innovations. Sustainability. Efficiency. Quality.

27 FEB - 1 MAR, INTERNATIONAL CONVENTION CENTRE SYDNEY
4 - 6 MAR, THE LANGHAM MELBOURNE



[Home](#) | [Conference Highlights](#) | [Who You Will Meet](#) | [Global Speakers](#) | [Agenda](#) | [Sponsors & Media](#) | [Fees & Registration](#) | [Contact Us](#)



JOIN US AT THE CONSTRUCTION TECHNOLOGY AUTOMATION & INNOVATION SHOWCASE

SYDNEY 27 FEBRUARY | MELBOURNE 4 MARCH

Discover the latest technology & equipments 

Melbourne MAR 4-6

Hot Topics to Be Discussed

DAY 1 : PRE-CONFERENCE

- **Construction Technology Automation & Innovation Showcase**
 - 3D Printing for Modular Construction
 - Robotics Brick Laying, Welding, Concrete Dispensing
 - Latest Developments in New Construction Automation Technologies
 - Upskilling Labour Force to Adopt New Construction Systems

DAY 2 : MAIN CONFERENCE

- Keynote: World-class International Prefab Modular Projects
- Singapore Success Case Study: Prefabricated Prefinished Volumetric Construction (PPVC)
- Prefabricating Schools, Childhood Centers and Universities
- Prefabricating Australia's Tallest Prefab Apartment: La Trobe Tower
- Australia's First Integrated "Modular" Design Hotel Tribe
- **CHAMPAGNE NETWORKING SESSION:** Enjoy a perfect glass of champagne, build exclusive networks and exchange powerful insights with delegates.

DAY 3 : MAIN CONFERENCE

- Creating Smarter Cities with Modular Construction
- World's Largest Engineered Timber Building Case Study: 25 King at Brisbane Showground
- Slashing Construction Time with Kitchen & Bathroom Pods New Designs
- Modular Construction Opportunities in Rural Health Care Facilities
- New Prefab Opportunities for Government, Institutional, Commercial and Infrastructural Projects



Meet Sam, the bricklaying robot



Melbourne MAR 14-15



14 - 15 MARCH

HORDEN PAVILLION &
ROYAL HALL OF INDUSTRIES



**BIM & DIGITAL
CONSTRUCTION**
SUMMIT




**MODULAR,
PREFAB & FORMWORK**
ZONE



FUTURE SYDNEY
SUMMIT

Melbourne APR 8-10

The image is a screenshot of the Locate19 website. At the top left is the Locate19 logo, which consists of a blue globe icon with a white location pin and the text "Locate19" in blue. To the right of the logo is a navigation menu with links: Home, Speakers, Program, Registration, Accommodation, APSEA Dinner, Sponsorship & Exhibition, and Contact. The main content area features a large background image of a man in a dark suit standing at a podium, gesturing with his right hand towards a large audience seated in a convention hall. On the left side of this image, the text "REGISTRATION NOW OPEN!" is displayed in large, bold, white capital letters. Below this text, in smaller white font, it says "Registration to attend Locate19 is now open - click below for more information". Underneath this text is an orange button with the text "LOCATE19 REGISTRATION" in white capital letters. At the bottom left of the main content area, there are three small horizontal bars in white, blue, and white.

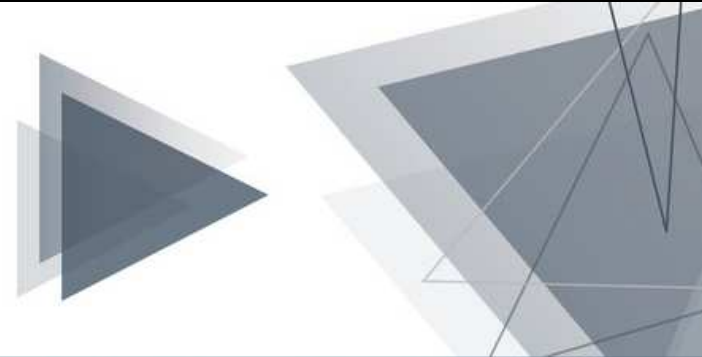
“Where to next? How geospatial science is driving our digital future”

IDEACTION.2019

FM FORECAST

BLUE SKIES, CLOUDS OR STORMS

HYATT REGENCY SYDNEY
2 - 5 JUNE 2019



[Home](#) [Welcome](#) [Program](#) [Venue & Location](#) [Accommodation](#) [Registration](#) [Sponsorship & Exhibitors](#) [FAQ's](#) [Contact](#)

CONFERENCE THEME

The theme of Ideaction.2019, "FM Forecast, Blue Skies, Clouds or Storms", is a concept which drives our focus on the rapidly changing environment, forecasting what is ahead in the facilities management industry and embracing new technologies and trends. There is an expectation that our four streams will again attract a high degree of interest given their direct relationship to the ever changing face of the industry.

In addition to our four streams, Ideaction.2019 will also be providing key sector streams, providing tailored information to specific sectors, including residential and strata, government, education and aged care.

Abstract Themes:

- Diversity & Inclusion
- FM & Artificial Intelligence
- Workplace & Wellness
- Sustainability & Resilience

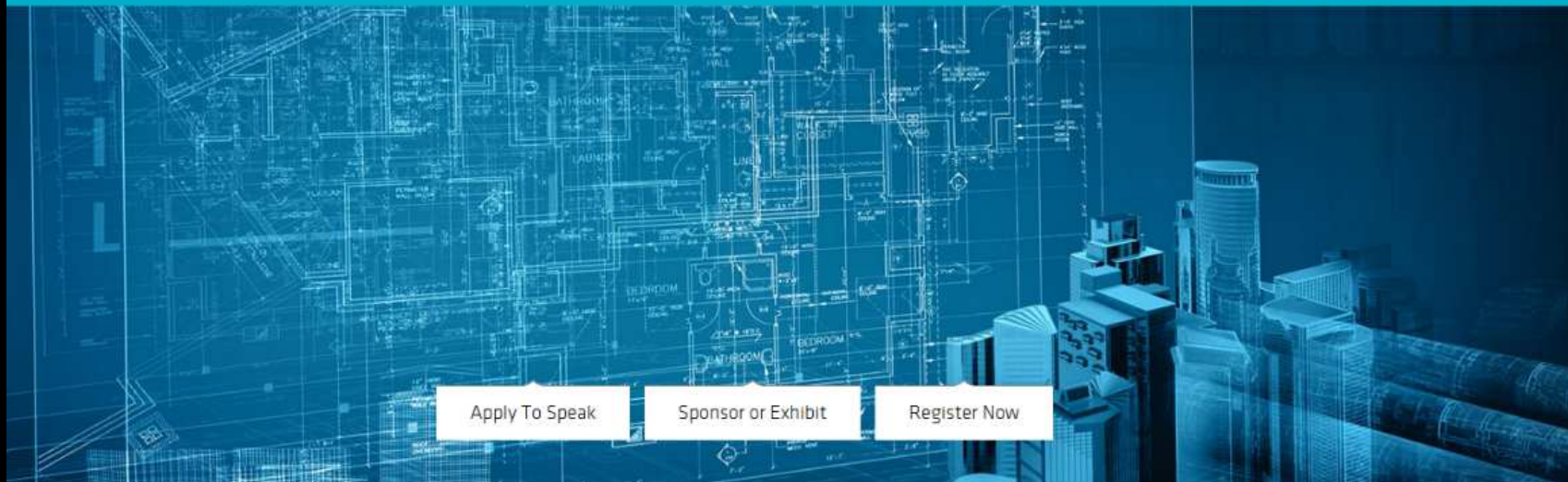
Abstract Sector Streams:

- Residential & Strata
- Government
- Education
- Health & Aged Care

Sydney JUN 2-5



Construction Innovation 2019 Forum



[Apply To Speak](#)

[Sponsor or Exhibit](#)

[Register Now](#)

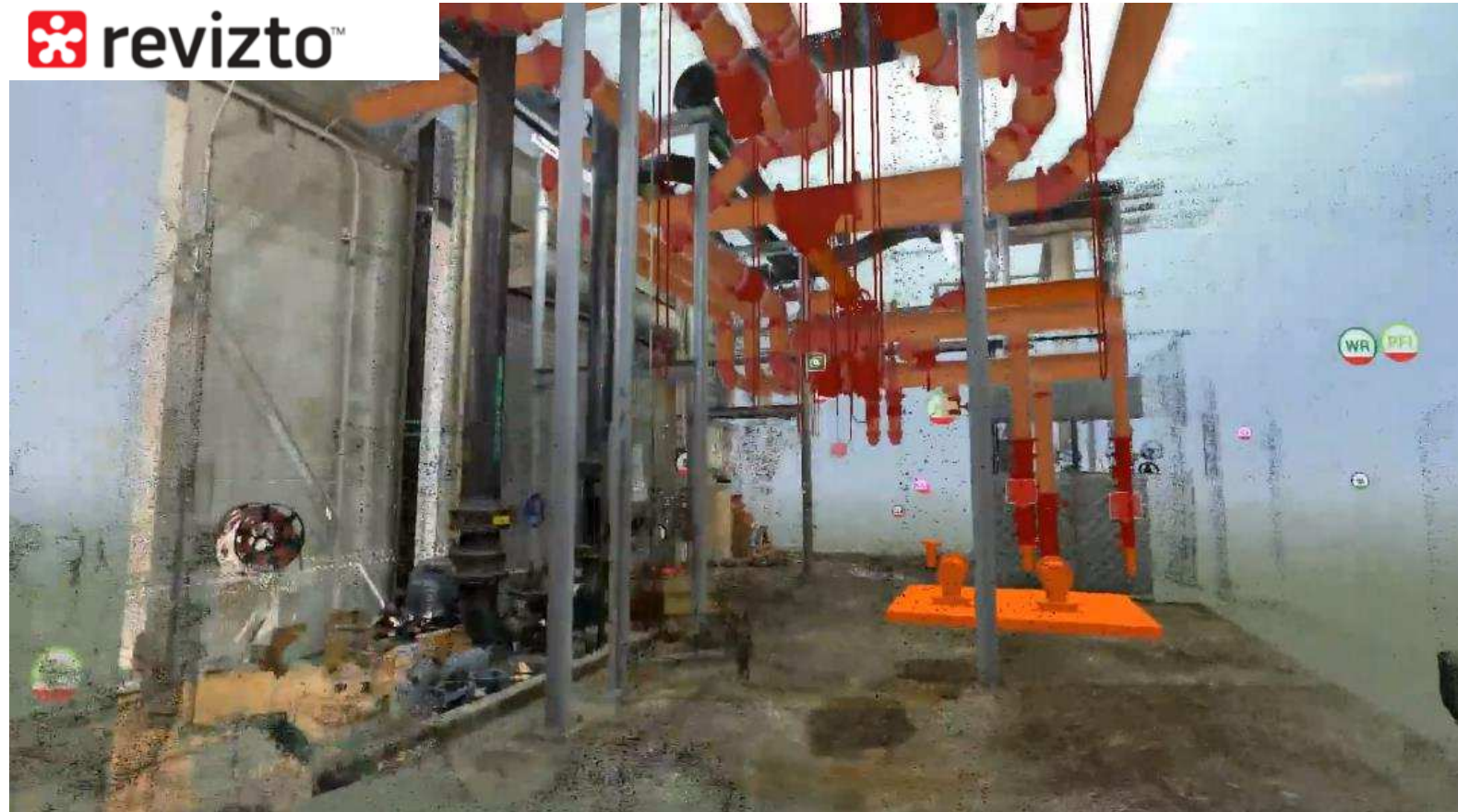
22-23 August 2019

Melbourne Convention and Exhibition Centre

THE ODD

BIT OF NEWS

- 360 degree photo support in Issue Tracker attachments
- Import/Export project settings
- New measurement tools: Point cloud optimizations and improvements
- Ability to add markups to 2D stamps



THE ODD

BIT OF NEWS

FACIAL RECOGNITION UP THE WAZOO

Millions are on the move in China, and Big Data is watching

More than 5 million people in China have now been banned from buying a high-speed rail ticket and 17 million stopped from buying air tickets because they appear on a social credit system black list.

By Kirsty Needham

February 6, 2019 – 11:30am



Beijing: At Beijing's high-speed railway station, there is confusion as city workers heading home for Spring Festival encounter a new machine where humans once checked tickets.

Hat off, scarf off, eyes ahead – despite the bitter winter chill, China's facial recognition system 2.0 requires a clear image for its records. Passengers also put their national identity card in the machine.



Train travellers are confronted by a new facial recognition system as they travel home from Beijing for Chinese New Year. SHANGHAI LIU

Dubbed the world's biggest human migration, Lunar New Year sees 400 million people across China travelling between January 21 and March 1.

Dai Shanshan, deputy director of the Beijing Station, told the *Beijing Evening News* that a system in which multiple cameras simultaneously watch a face has improved the speed and accuracy of Facial Recognition 2.0, a major upgrade installed for the railway's peak season.

THE ODD

BIT OF NEWS

ABAB PUBLICATIONS

BIM Consistency Documents



BIM Process Consistency: Towards a Common Framework for Digital Design, Construction and Operation

Overview Report



www.abab.net.au

THE ODD

BIT OF NEWS

ABAB
PUBLICATIONS



Asset Information Requirements Guide:
Information required for the operation and maintenance of an asset



www.abab.net.au

Identifies the asset information components that are expected to be delivered in response to asset information requirements (AIR): models, documents and data.

It explains the basic concepts of digital information management (e.g. structured data) for those new to the subject, and seeks to dispel common misconceptions.

Focuses more on decision-making about the information required, rather than on providing detailed coverage about the information itself

THE ODD

BIT OF NEWS

NATSPEC worked with Masterspec (New Zealand) to develop a BIM object standard.

The OBOS complements and aligns with the recently released NATSPEC BIM Properties Generator

Technology Innovation in the Built Environment



TolietPan		
IFCElementType:	ifcSanitaryTerminal	= IfcExportAs
ProductType:	TOILETPAN	= IfcExportType
3dModelViewStyle:	TolietPan	
Supported IOD (Design Model):	300	
Design Model):	Plumbing, Interiors	
iclass2015ProductsCode	Pr_40_20_93_94	Classification data
iclass2015ProductsTitle	WC pans	Classification data
iclass2015ProductsVersion	1.11	Classification data
CreatedBy	NATSPEC BIM	Admin data
CreatedByURL	NATSPEC BIM	Admin data
ModifiedIssue	NATSPEC BIM	Admin data
Rating	NATSPEC BIM	Code compliance data
ConstructionMethod	NATSPEC BIM	Construction logistics data
GrossWeight	NATSPEC BIM	Construction logistics data
LiftingWeight	NATSPEC BIM	Construction logistics data
StoragePlacementOnSite	NATSPEC BIM	Construction logistics data
AdditionalTax	NATSPEC BIM	Cost data
AssemblyCost	NATSPEC BIM	Cost data
ConceptualCost	NATSPEC BIM	Cost data
CostOverRun	NATSPEC BIM	Cost data
FutureCostAssumptions	NATSPEC BIM	Cost data
InstallationCost	NATSPEC BIM	Cost data
InstalledCost	NATSPEC BIM	Cost data
PurchaseInformation	NATSPEC BIM	Cost data
RecordedActualCost	NATSPEC BIM	Cost data
LiftingCost	NATSPEC BIM	Cost data
MaterialOwnershipCost	NATSPEC BIM	Cost data
AssessmentCondition	NATSPEC BIM	Facilities management data
ComponentID	NATSPEC BIM	Facilities management data
ExpectedLife	NATSPEC BIM	Facilities management data
InstallationDate	NATSPEC BIM	Facilities management data
PlacementCost	NATSPEC BIM	Facilities management data
WarrantyContent	NATSPEC BIM	Facilities management data
WarrantyEndDate	NATSPEC BIM	Facilities management data
WarrantyStartDate	NATSPEC BIM	Facilities management data
Capacity	NATSPEC BIM	Geometric data

THE ODD

BIT OF NEWS

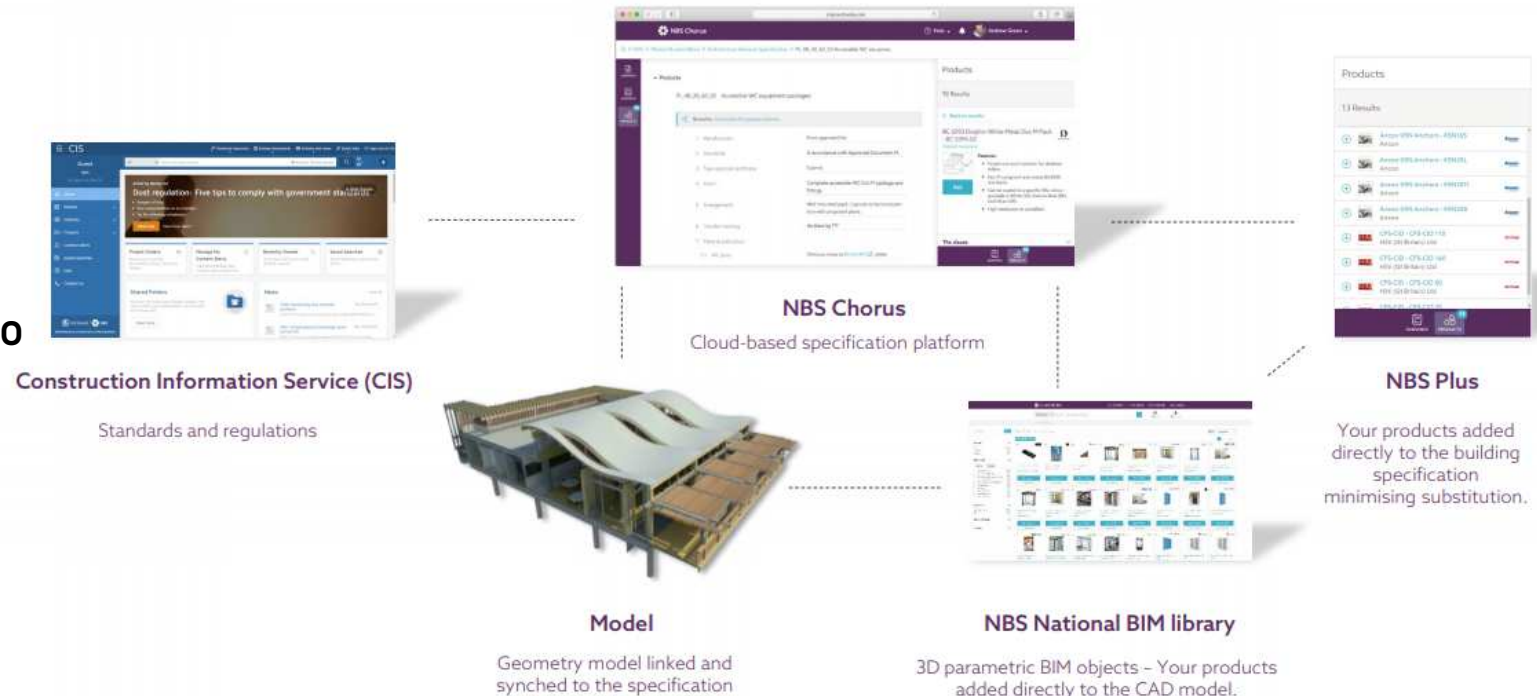
“NBS Chorus is the first intelligent, cloud based construction specification tool that links seamlessly to your BIM geometry model and the NBS BIM object Library using the NBS plugin. Australian specific content has been authored in Uniclass 2015 format to suit Australian Standards, the National Construction Code and local codes of practice.”

Technology Innovation in the Built Environment



Intelligent construction specification

Used by over 90% of the AJ top 100 our platform enables architects, designers and engineers to rapidly develop specifications, and to work smarter and safer



WWW.THENBS.COM
MAY 2019



THE ODD

BIT OF NEWS

International Construction Measurement Coalition.

Seeking consultation for the second round.

A global cost management system for the construction industry.

UNICLASS FOR
BEAN COUNTERS?

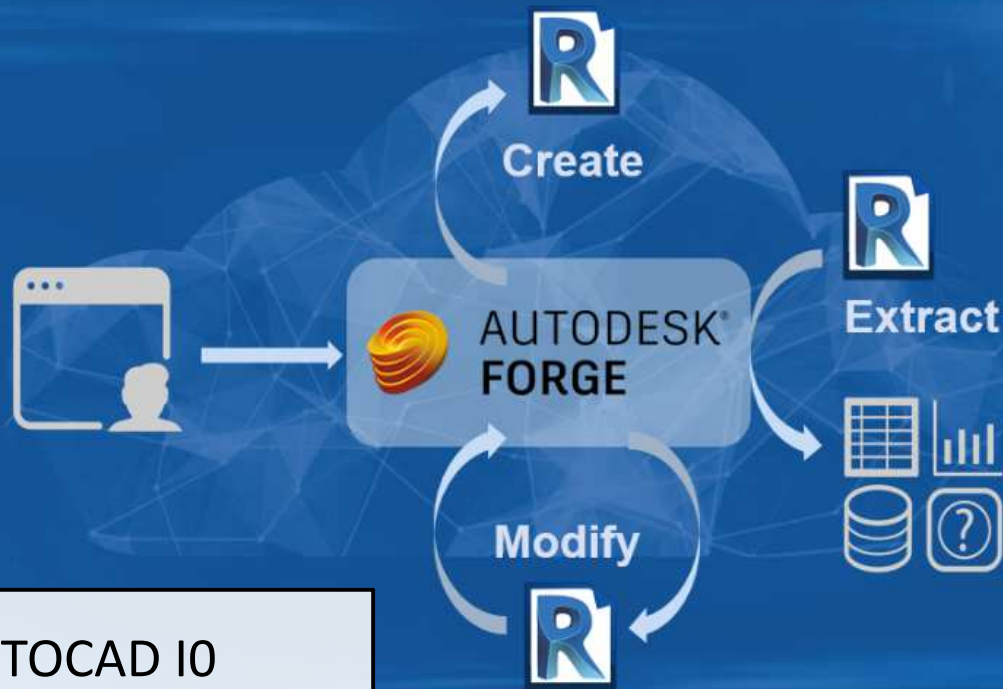
Technology Innovation in the Built Environment

The screenshot shows the RICS website with the following elements:

- Header:** RICS logo, navigation links (News & Insight, Upholding Professional Standards, Training & Events, Careers, Qualify, Assessment), and a search bar.
- Breadcrumb:** Home > News & Insight > Contribute > Consultations > Consultation for ICMS 2nd Edition
- Call to Action:** A green button labeled "Register your interest".
- Main Content:** A large banner with the title "Consultation for ICMS 2nd Edition" and the text: "The International Construction Measurement Standards Coalition are seeking feedback on the second edition of ICMS, which incorporates life cycle costs."
- Right Sidebar:** A blue box with the text "Share your views on ICMS 2nd Edition" and a "TAKE PART >" button.

THE ODD

BIT OF NEWS



AUTOCAD IO DESIGN AUTOMATION

Design Automation puts the power of the Revit API at your fingertips in a Forge-based service.

e.g. create models automatically by entering parameters, validating specified design criteria and generating reports, and automatically modifying the model

Create cloud-native applications that work with Revit data